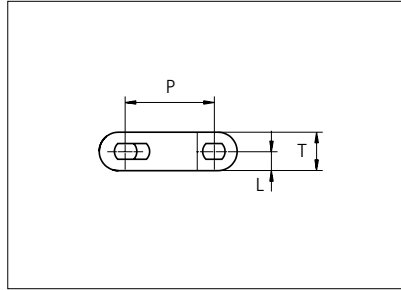
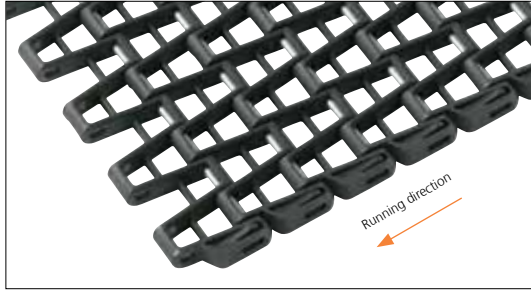




Plastic Modular Belt

Series **uni OWL** Type **66%**



Straight running belt
 Nominal pitch: 27.9 mm (1.10 in)
 Surface type: Flat
 Surface opening: 66%
 Backflex radius: 40.0 mm (1.57 in)
 Pin diameter: \varnothing 4.0 mm (0.16 in)
 Travel in both directions is possible.
 uni-chains recommends this travel direction.

Belt material & color	PA6.6 GFH K	PA6.6 GFH B	PP W	PP B	mm	in	T	mm	in	
	Pin and lock material & color	SS304	SS304	PBT LG						PBT LG
	PA6.6 GFH K	PA6.6 GFH B	PP W	PP B	L	5.5	0.22	-	-	-

Non standard material and color: See uni Material and Color Overview.

Alternative pin and lock materials: Pin: PA6.6 **B** PBT **LG** SS304

*Belt width		Permissible tensile force (Belt/pin material)				Belt weight (Belt/pin material)				**Min. No. drive sprocket per shaft	Number of wear strips (Min. No.)	
		PA6.6 GFH/SS		PP/PA6.6		PA6.6 GFH/SS		PP/PA6.6			***Carry (pcs)	***Return (pcs)
mm	in	N	lbf	N	lbf	kg/m	lb/ft	kg/m	lb/ft			
303	11.9	3636	817	2424	545	2.3	1.57	1.4	0.94	3	3	2
337	13.3	4040	908	2693	605	2.6	1.74	1.5	1.04	3	3	2
370	14.6	4443	999	2962	666	2.9	1.92	1.7	1.14	3	3	2
404	15.9	4847	1090	3231	726	3.1	2.09	1.9	1.25	3	3	2
438	17.2	5250	1180	3500	787	3.4	2.26	2.0	1.35	3	3	2
471	18.5	5654	1271	3769	847	3.6	2.44	2.2	1.46	4	4	2
505	19.9	6057	1362	4038	908	3.9	2.61	2.3	1.56	4	4	2
538	21.2	6461	1452	4307	968	4.1	2.79	2.5	1.66	4	4	2
572	22.5	6864	1543	4576	1029	4.4	2.96	2.6	1.77	4	4	2
606	23.8	7268	1634	4845	1089	4.7	3.13	2.8	1.87	5	5	3
639	25.2	7672	1725	5114	1150	4.9	3.31	2.9	1.98	5	5	3
673	26.5	8075	1815	5383	1210	5.2	3.48	3.1	2.08	5	5	3
707	27.8	8479	1906	5652	1271	5.4	3.66	3.3	2.18	5	5	3

Standard Increments in belt width : 33.6 mm (1.32 in.)

1984	78.1	23808	5352	15872	3568	15.3	10.27	9.1	6.13	14	14	7
------	------	-------	------	-------	------	------	-------	-----	------	----	----	---

Standard Increments in belt width : 33.6 mm (1.32 in.)

2993	117.8	35916	8074	23944	5383	23.0	15.49	13.8	9.25	20	20	10
------	-------	-------	------	-------	------	------	-------	------	------	----	----	----

*The belt width in PA6.6 GFH is 1% wider than the belt width in the table

**Max. Load per Drive Sprocket. Belt material: PA6.6 GFH 1200 N (270 lbf), PP 800 N (180 lbf)

***Max. Spacing between wear strips, Carry: 152 mm (6 in.) ; Return: 304 mm (12 in.)



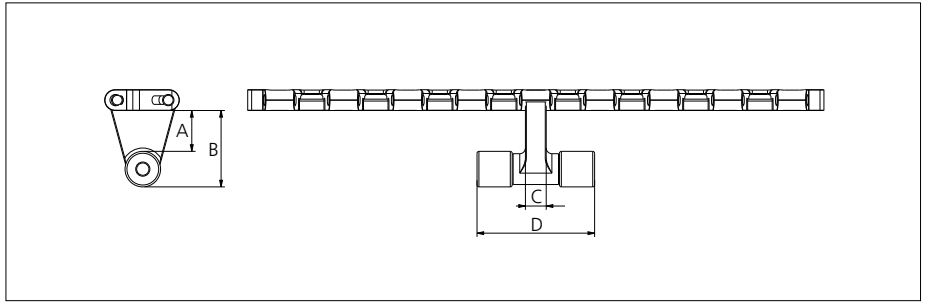
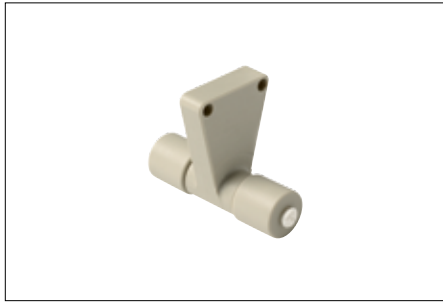
STANDARD

STRAIGHT RUNNING

PITCH 27.9 MM/1.10 IN

Accessories

Tab/NON STANDARD



Type	Belt material & color	A		B		C		D	
		mm	in	mm	in	mm	in	mm	in
Bottom Hold Down	PP W	23.6	0.93	42.6	1.68	11.0	0.43	63.5	2.50

Non Standard material and color: See uni Material and Color Overview.

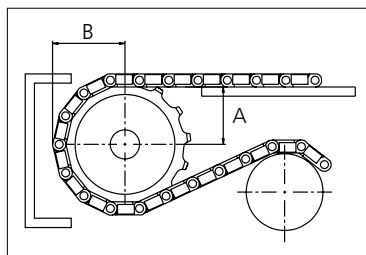
Sprocket

No of teeth	Bore size													Overall diameter		Pitch-diameter		Hub-diameter		A-dimension		B-dimension		Single row/One way	Double row/Two way	Molded PA6 LG	Machined PA6 N
	Pilot bore		0.75	0.78	0.98	1.00	1.18	1.25	1.50	1.57	2.36	2.50	3.54														
	mm	in	19.1	20.0	25.0	25.4	30.0	31.8	38.1	40.0	60.0	63.5	90.0	mm	in	mm	in	mm	in	mm	in						
29				■	●	●	●		●				82.7	3.26	80.2	3.16	63.7	2.51	32.8	1.29	46.4	1.83	x			x	
Z11					●	●	●	■	●				101.0	3.98	97.9	3.85	82.0	3.23	42.0	1.65	55.1	2.17	x			x	
Z13					●	●	●	■	●				119.2	4.69	115.6	4.55	100.2	3.94	51.1	2.01	63.8	2.51	x			x	
Z15						●	●	●	●	■			137.3	5.41	133.4	5.25	118.3	4.66	60.1	2.37	72.6	2.86	x			x	

■ Machined sprocket



● Machined sprocket



Other sprocket sizes are available upon request.
 Two-part sprocket are available upon request.
 Round bores are always delivered with keyway.
 Other bore sizes are available upon request.
 uni Retainer Rings: See uni Retainer Ring data sheet.
 Width of tooth = 12.5 mm (0.49 in)
 Width of sprocket = 30.0 mm (1.18 in)

Max load per sprocket shown does not take bore size into account.
 Please also ensure that sufficient size shaft is chosen for corresponding load.

For correct sprocket position: See uni Assembly Instructions for uni OWL.
 For more detailed sprocket information, contact Customer Service.

Non standard material and color: See uni Material and Color Overview.



Solid advice
 For all your belting needs
 Local stock & service
www.ammeraalbeltech.com

Ammeraal Beltech Modular A/S
 Hjulmagervej 21
 DK-7100 Vejle

T +45 7572 3100
 F +45 7572 3348
 admin@unichains.com
 www.unichains.com

This information is subject to alteration due to continuous development. Ammeraal Beltech will not be held liable for the incorrect use of the above stated information. This information replaces previous information. All activities performed and services rendered by Ammeraal Beltech are subject to general terms and conditions of sale and delivery, as applied by its operating companies.