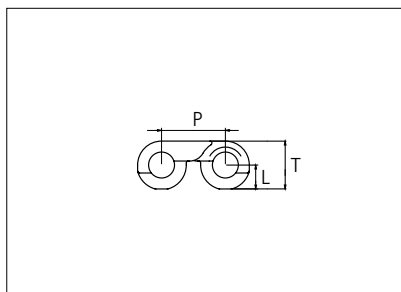
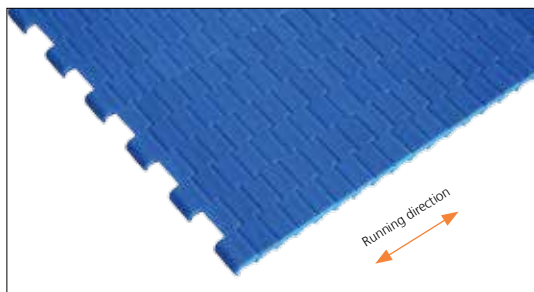




Plastic Modular Belt

Serie **uni NTB** Type **C**



Straight Running Belt
 Nominal pitch: 8.0 mm (0.32 in)
 Surface type: Flat
 Surface opening: Closed
 Backflex radius: R6 mm (0.24 in)
 Pin diameter: 3.0 mm (0.12 in)

Belt material & color	POM-D B		mm	in		mm	in
Pin material & color	PA6.6 B	P (Nominal)	8.0	0.32	T	6.00	0.24
		L	3.00	0.12	-	-	-

Non standard material and color: See uni Material and Color Overview.

Alternative pin and lock materials: PBT **LG**

Belt width		Permissible tensile force (Belt/pin material)		Belt weight (Belt/pin material)		*Min No drive sprocket per shaft	Number of wear strips (min no)	
		POM-D/PA6.6		POM-D/PA6.6			**Carry (pcs)	**Return (pcs)
mm	in	N	lbf	Kg/m	lb/ft			
76	3.0	167	38	0.4	0.24	2	2	2
153	6.0	337	76	0.7	0.49	2	2	2
229	9.0	504	113	1.1	0.73	3	3	2
305	12.0	671	151	1.5	0.98	4	4	2
381	15.0	838	188	1.8	1.22	4	4	2
458	18.0	1008	227	2.2	1.47	5	5	3
534	21.0	1175	264	2.5	1.71	6	6	3
610	24.0	1342	302	2.9	1.95	7	7	4
686	27.0	1509	339	3.3	2.19	7	7	4
762	30.0	1676	377	3.6	2.44	8	8	4
839	33.0	1846	415	4.0	2.68	9	9	5
915	36.0	2013	453	4.4	2.93	10	10	5
991	39.0	2180	490	4.7	3.17	10	10	5
1448	57.0	3186	716	6.9	4.63	15	15	8
1982	78.0	4360	980	9.4	6.34	20	20	10

Additional standard belt widths are available in steps of 76.2 mm (3.00 in). Additional non-standard belt widths are available in steps of 12.7 mm (0.50 in).

1448	57.0	3186	716	6.9	4.63	15	15	8
------	------	------	-----	-----	------	----	----	---

Additional standard belt widths are available in steps of 76.2 mm (3.00 in). Additional non-standard belt widths are available in steps of 12.7 mm (0.50 in).

1982	78.0	4360	980	9.4	6.34	20	20	10
------	------	------	-----	-----	------	----	----	----

General belt tolerance is +0/-0.4% at 23°C/73°F and 50% RH. For exact belt width contact Customer Service. Non standard belt width on request.

*Max. Load per Drive Sprocket. Belt material: POM-D 200N (44 lbf).

**Max. Spacing between wear strips, Carry: 102 mm (4 in); Return: 203 mm (8 in).

= Single Link



STANDARD

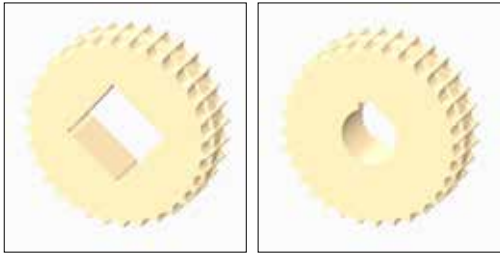
STRAIGHT RUNNING

PITCH 8.0 MM/0.32 IN

Sprocket

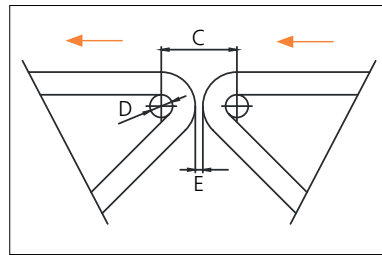
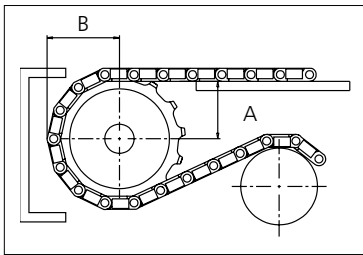
No. of teeth	Bore size										Overall diameter		Pitch diameter		Hub diameter		Dimension A		Dimension B		Single row/Two way	Double row/Two way	Molded PA6 LG	Machined PA6 N
	Pilot bore	in	0.75	0.78	0.98	1.00	1.18	1.25	1.50	1.57														
	mm	19.1	20.0	25.0	25.4	30.0	31.8	38.1	40.0	mm	in	mm	in	mm	in	mm	in							
Z24	x		●		●						61.3	2.41	61.3	2.41	0	0	27.38	1.08	33.65	1.32		x		x
Z32	x		●							■	81.6	3.21	81.7	3.21	0	0	37.61	1-48	43.8	1.72		x		x
Z48	x		●							■	122.7	4.83	122.4	4.81	0	0	58.03	2.28	64.16	2.52		x		x
Z60	x		●							■	152.9	6.02	152.9	6.02	0	0	73.32	2.88	79.43	3.13		x		x

■ Machined sprocket ● Machined sprocket



Non standard material and color: See uni Material and Color Overview.

Nosebars Min. Dimensions



	mm	in
C	20.0	0.79
D	6.0	0.24
E	2.0	0.08

Other sprocket sizes are available upon request.
 Round bores are always delivered with keyway.
 Other bore sizes are available upon request.
 uni Retainer Rings: See uni Retainer Ring data sheet.
 Width of tooth = 9.0 mm (0.35 in)
 Width of sprocket = 25.0 mm (0.98 in)

Max load per sprocket shown does not take bore size into account.
 Please also ensure that sufficient size shaft is chosen for corresponding load.

For correct sprocket position: See uni Assembly Instructions for uni NTB.
 For more detailed sprocket information, contact Customer Service.

uni NTB C/150817



Expert advice, quality solutions and local service for all your belting needs
www.ammeraalbeltech.com

Ammeraal Beltech Modular A/S
 Hjulmagervej 21
 DK-7100 Vejle

T +45 7572 3100
 F +45 7572 3348
 admin@unichains.com
 www.unichains.com

This information is subject to alteration due to continuous development. Ammeraal Beltech will not be held liable for the incorrect use of the above stated information. This information replaces previous information. All activities performed and services rendered by Ammeraal Beltech are subject to general terms and conditions of sale and delivery, as applied by its operating companies.