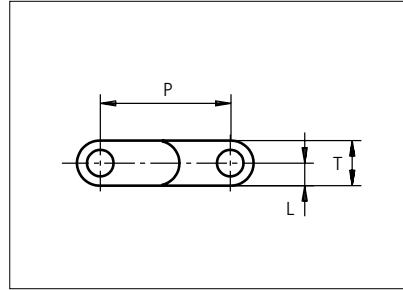
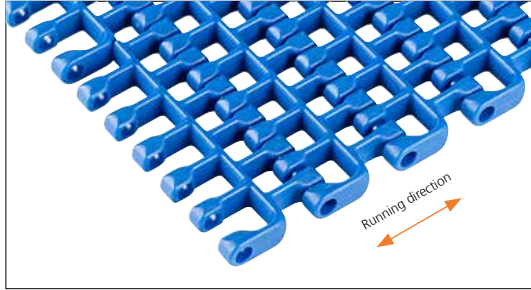




Plastic Modular Belt

Series **uni SNB** Type **M2 50%**



Straight running belt
 Nominal pitch: 25.4 mm (1.00 in)
 Surface type: Flat
 Surface opening: 50%
 Backflex radius: 30.0 mm (1.20 in)
 Pin diameter: 5 mm (0.20 in)

Belt material & color	PA6.6 B	PP B	PP W G	mm	in		mm	in	
	Pin material & color			P (Nominal)	25.4	1.00	L	4.4	0.17
	PP B			T	8.8	0.35	-	-	-

Non standard material and color: See uni Material and Color Overview.

Alternative pin and lock materials: Lockpin: PBT **LG** PA6.6 **D** **N** PP **B** **W** PE **N**

Belt width		Permissible tensile force (Belt/pin material)				Belt weight (Belt/pin material)				*Min. No. drive sprocket per shaft	Number of wear strips (Min. No.)	
		PP/PP		PA6.6/PP		PP/PP		PA6.6/PP			**Carry (pcs)	**Return (pcs)
mm	in	N	lbf	N	lbf	kg/m	lb/ft	kg/m	lb/ft			
153	6.0	1836	413	3060	688	0.5	0.31	0.6	0.38	2	2	2
229	9.0	2748	618	4580	1030	0.7	0.47	0.8	0.56	2	2	2
305	12.0	3660	823	6100	1371	0.9	0.62	1.1	0.75	3	3	2
381	15.0	4572	1028	7620	1713	1.2	0.78	1.4	0.94	3	3	2
457	18.0	5484	1233	9140	2055	1.4	0.93	1.7	1.13	4	4	2
533	21.0	6396	1438	10660	2396	1.6	1.09	2.0	1.31	4	4	2
609	24.0	7308	1643	12180	2738	1.8	1.24	2.2	1.50	5	5	3
685	27.0	8220	1848	13700	3080	2.1	1.39	2.5	1.69	5	5	3
761	30.0	9132	2053	15220	3421	2.3	1.55	2.8	1.88	6	6	3
837	33.0	10044	2258	16740	3763	2.5	1.70	3.1	2.06	6	6	3
913	35.9	10956	2463	18260	4105	2.8	1.86	3.4	2.25	7	7	4
989	38.9	11868	2668	19780	4447	3.0	2.01	3.6	2.44	7	7	4
1065	41.9	12780	2873	21300	4788	3.2	2.17	3.9	2.63	8	8	4

Additional standard belt widths are available in steps of 76.1 mm (3.00 in). Additional non-standard belt widths are available in steps of 12.7 mm (0.50 in).

1977	77.8	23724	5333	39540	8889	6.0	4.03	7.3	4.88	14	14	7
------	------	-------	------	-------	------	-----	------	-----	------	----	----	---

Additional standard belt widths are available in steps of 76.1 mm (3.00 in). Additional non-standard belt widths are available in steps of 12.7 mm (0.50 in).

2965	116.7	35580	7998	59300	13331	9.0	6.04	10.9	7.31	20	20	10
------	-------	-------	------	-------	-------	-----	------	------	------	----	----	----

General belt tolerance is +0/-0.4% at 23°C/73°F and 50% RH. For exact belt width contact Customer Service. Non standard belt width on request.

Belt widths in PA66 is 0,2 % wider than the belt widths in the table above.

*Max. Load per Drive Sprocket. Belt material: PP 1100 N (247 lbf); PA66 1400 N (315 lbf).

**Max. Spacing between wear strips, Carry: 152 mm (6 in.); Return: 304 mm (12 in).

□ = Single Link



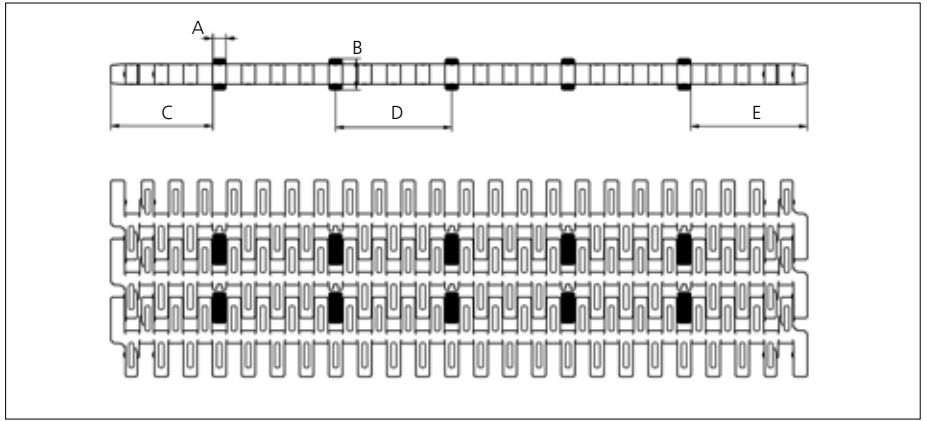
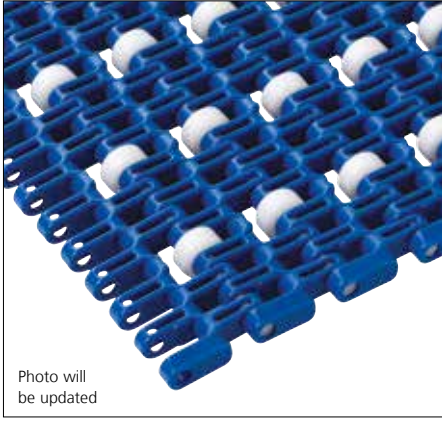
STANDARD

STRAIGHT RUNNING

PITCH 25.4 MM/1.00 IN

Accessories

Rollers NON STANDARD

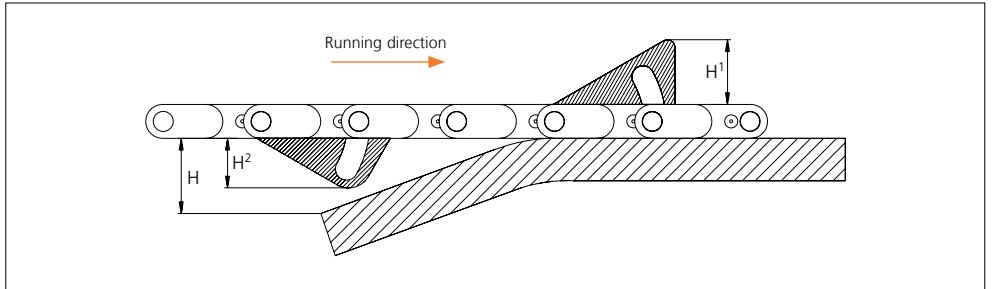
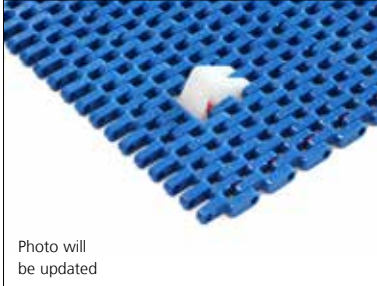


Type	Roller material & color	A		B		C		D		E	
		mm	in	mm	in	mm	in	mm	in	mm	in
Plastic	POM-D W	5.7	0.22	13.5	0.53	44.6	1.75	50.8	2.00	51.0	2.01

Non Standard material and color: See uni Material and Color Overview.

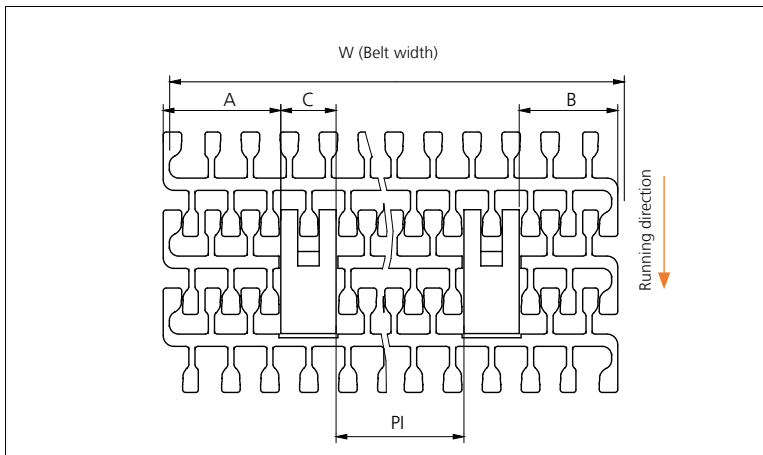
Accessories

AmFlight



Type	Material & color	H		H ¹		H ²	
		mm	in	mm	in	mm	in
Push	PE W	17.0	0.67	17.0	0.67	14.4	0.57

Other Non Standard option: See uni AmFlight Overview.



	mm	in
A min	38.3	1.51
B min	32.1	1.26
C	18.0	0.71
PI max	W - 106.4	W - 4.19
PI min	33.2	1.31

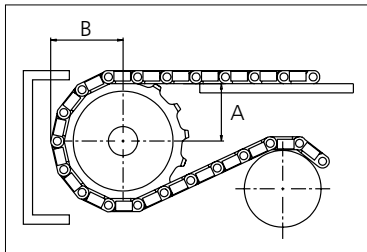
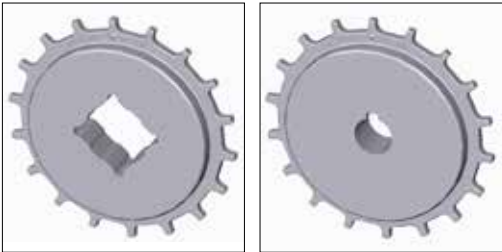
Increment: 12.7 mm (0.50 in).

Sprocket

No. of teeth	Pilot Bore	Bore size												Overall diameter		Pitch-diameter		Hub-diameter		A-dimension		B-dimension		Single row/Two way	Double row/Two way	Machined		
		in	0.75	0.78	0.98	1.00	1.18	1.25	1.50	1.57	2.36	2.50	3.54													PAG	LG	N
		mm	19.1	20.0	25.0	25.4	30.0	31.8	38.1	40.0	60.0	63.5	90.0	mm	in	mm	in	mm	in	mm	in	Molded	Machined					
Z10	x					●	●	●	■	●					86.0	3.39	82.2	3.24	65.0	2.56	34.7	1.37	45.5	1.79	x		x	
Z12	x					●	●	●	■	■					103.2	4.06	98.1	3.86	65.0	2.56	43.0	1.69	53.5	2.11	x		x	
Z18	x						●	●	■	■					151.9	5.98	146.3	5.76	65.0	2.56	67.6	2.66	77.6	3.06	x		x	
Z18	x												●	●	151.9	5.98	146.3	5.76	120.0	4.72	67.6	2.66	77.6	3.06	x		x	
Z19	x						●	●	■	■					160.0	6.30	154.3	6.07	65.0	2.56	71.7	2.82	81.6	3.21	x		x	
Z19	x												●	●	160.0	6.30	154.3	6.07	120.0	4.72	71.7	2.82	81.6	3.21	x		x	
Z20	x						●	●	■	■					168.2	6.62	162.4	6.39	65.0	2.56	75.8	2.98	85.6	3.37	x		x	
Z20	x												●	●	168.2	6.62	162.4	6.39	120.0	4.72	75.8	2.98	85.6	3.37	x		x	

■ Molded sprocket

● Molded sprocket



Other sprocket sizes are available upon request.

Two-part sprocket are available upon request.

Round bores are always delivered with keyway.

Other bore sizes are available upon request.

uni Retainer Rings: See uni Retainer Ring data sheet.

Width of tooth = 6.0 mm (0.24 in)

Width of sprocket = 25.0 mm (0.98 in)

Max load per sprocket shown does not take bore size into account.

Please also ensure that sufficient size shaft is chosen for corresponding load.

For correct sprocket position: See uni Assembly Instructions for uni SNB.

For more detailed sprocket information. contact Customer Service.

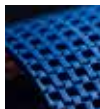
Non standard material and color: See uni Material and Color Overview.



Conveyor Belts



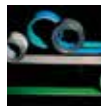
Seamless Belts



Modular Belts



Timing Belts



Transmission Belts



Fabrication & service

Expert advice, quality solutions
and local service
for all your belting needs
www.ammeraalbeltech.com

Ammeraal Beltech Modular A/S
Hjulmagervej 21
DK-7100 Vejle

T +45 7572 3100
F +45 7572 3348
admin@unichains.com
www.unichains.com

This information is subject to alteration due to continuous development. Ammeraal Beltech will not be held liable for the incorrect use of the above stated information. This information replaces previous information. All activities performed and services rendered by Ammeraal Beltech are subject to general terms and conditions of sale and delivery, as applied by its operating companies.