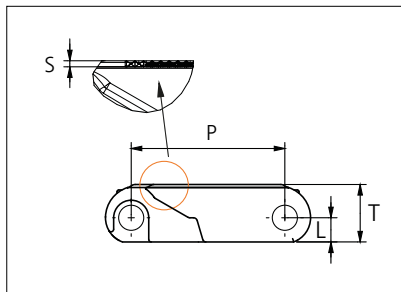




# Plastic Modular Belt

Series **uni CPB** Type **Rough Embedded**



Straight running belt  
 Nominal pitch: 50.8 mm (2.00 in)  
 Surface type: Rough Embedded  
 Surface opening: 0%  
 Backflex radius: 85.0 mm (3.30 in)  
 Pin diameter: 8.0 mm (0.31 in)

Belt material & color	POM-DI UV <span style="border: 1px solid black; padding: 0 2px;">O</span> <span style="border: 1px solid black; padding: 0 2px;">W</span>	mm	in	S	mm	in
	PP-I UV <span style="border: 1px solid black; padding: 0 2px;">W</span>					
Pin and lock material & color	PBT-GR <span style="border: 1px solid black; padding: 0 2px;">N</span>	L	mm	T	mm	in
	PA6.6 <span style="border: 1px solid black; padding: 0 2px;">N</span>					

Non standard material and color: See uni Material and Color Overview.

Belt width		Permissible tensile force (Belt/pin material)				Belt weight (Belt/pin material)				*Min. No. drive sprocket per shaft	Number of wear strips (Min. No.)	
		POM-DI UV/PBT-GR		PP UV/PBT-GR		POM-DI UV/PBT-GR		PP UV/PBT-GR			**Carry (pcs)	**Return (pcs)
mm	in	N	lbf	N	lbf	kg/m	lb/ft	kg/m	lb/ft			
151	5.9	7826	1759	5268	1184	2.5	1.68	1.7	1.12	2	2	2
403	15.9	20956	4711	14105	3171	6.7	4.50	4.5	3.01	3	3	2
453	17.8	23556	5295	15855	3564	7.5	5.05	5.0	3.38	4	4	2
503	19.8	26156	5880	17605	3958	8.3	5.61	5.6	3.75	4	4	2
553	21.8	28756	6464	19355	4351	9.2	6.17	6.1	4.13	4	4	2
604	23.8	31408	7061	21140	4752	10.0	6.74	6.7	4.51	5	5	3
654	25.7	34008	7645	22890	5146	10.9	7.30	7.3	4.88	5	5	3
704	27.7	36608	8229	24640	5539	11.7	7.85	7.8	5.25	5	5	3
754	29.7	39208	8814	26390	5932	12.5	8.41	8.4	5.62	6	6	3
805	31.7	41860	9410	28175	6334	13.4	8.98	8.9	6.01	6	6	3
855	33.7	44460	9995	29925	6727	14.2	9.54	9.5	6.38	6	6	3
905	35.6	47060	10579	31675	7121	15.0	10.10	10.0	6.75	7	7	4
956	37.6	49712	11175	33460	7522	15.9	10.67	10.6	7.13	7	7	4

Additional standard belt widths are available in steps of 50.3 mm (1.98 in). Additional non-standard belt widths are available in steps of 16.8 mm (0.66 in).

1961	77.2	101972	22923	68635	15429	32.6	21.88	21.8	14.63	14	14	7
------	------	--------	-------	-------	-------	------	-------	------	-------	----	----	---

Additional standard belt widths are available in steps of 50.3 mm (1.98 in). Additional non-standard belt widths are available in steps of 16.8 mm (0.66 in).

2966	116.8	154232	34671	103810	23336	49.2	33.09	32.9	22.13	20	20	10
------	-------	--------	-------	--------	-------	------	-------	------	-------	----	----	----

General belt tolerance is +0/-0.4% at 23°C/73°F and 50% RH. For exact belt width contact Customer Service. Non standard belt width on request.

\*Max. Load per Drive Sprocket. Belt material: POM-NLAS 2500 N (560 lbf), POM-NL 2500 N (560 lbf), PP 2500 N (560 lbf).

\*\*Max. Spacing between wear strips, Carry: 152 mm (6 in); Return: 304 mm (12 in).

= Single Link



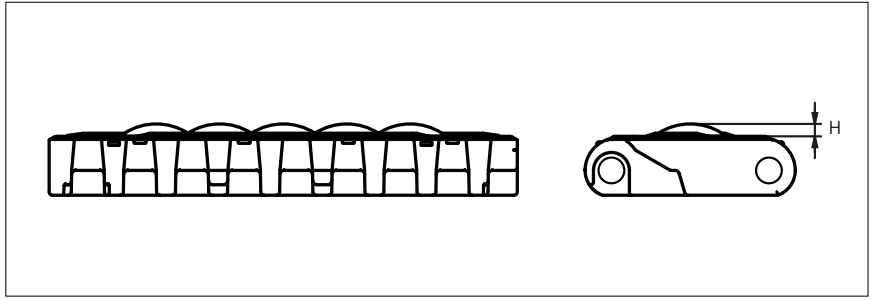
STANDARD

STRAIGHT RUNNING

PITCH 50.8 MM/2.00 IN

## Accessories

### Rubber Top

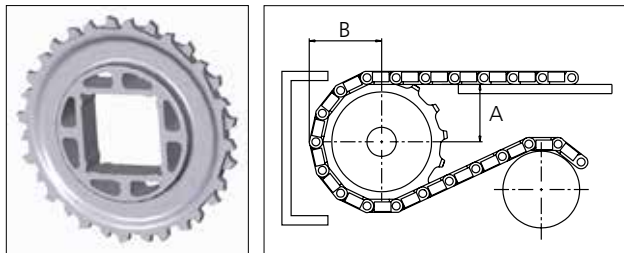


Type	Belt material & color	Rubber material & color	H		Link size	Width	
			mm	in		mm	in
Dome	PPI/UV <b>W</b>	03K <b>K</b>	4.0	0.16	K600	150.5	5.93

### Sprocket

No of teeth	Bore size					Overall diameter		Pitch-diameter		Hub-diameter		Dimension A		Dimension B		Single row/One way	Double row/Two way	Molded PA6 LG	Machined PA6 N
	in	1.57	2.36	2.50	3.54														
	mm	40.0	60.0	63.5	90.0	mm	in	mm	in	mm	in	mm	in	mm	in				
Z16			■		■	263.8	10.39	260.4	10.25	160	6.29	119.7	4.71	138.7	5.46		x	x	

#### ■ Molded sprocket



Non standard material and color: See uni Material and Color Overview.

Other sprocket sizes are available upon request.  
 Two-part sprocket are available upon request.  
 Round bores are always delivered with keyway.  
 Other bore sizes are available upon request.  
 uni Retainer Rings: See uni Retainer Ring data sheet.  
 Width of tooth = 9.5 mm (0.37 in)  
 Width of sprocket = 40.8.0 mm (1.60 in)

Max load per sprocket shown does not take bore size into account.  
 Please also ensure that sufficient size shaft is chosen for corresponding load.

For correct sprocket position: See uni Assembly Instructions for uni CPB.  
 For more detailed sprocket information, contact Customer Service.

uni CPB Rough Embedded/160712



Expert advice, quality solutions and local service for all your belting needs  
[www.ammeraalbeltech.com](http://www.ammeraalbeltech.com)

**Ammeraal Beltech Modular A/S**  
 Hjulmagervej 21  
 DK-7100 Vejle

T +45 7572 3100  
 F +45 7572 3348  
 admin@unichains.com  
 www.unichains.com

This information is subject to alteration due to continuous development. Ammeraal Beltech will not be held liable for the incorrect use of the above stated information. This information replaces previous information. All activities performed and services rendered by Ammeraal Beltech are subject to general terms and conditions of sale and delivery, as applied by its operating companies.