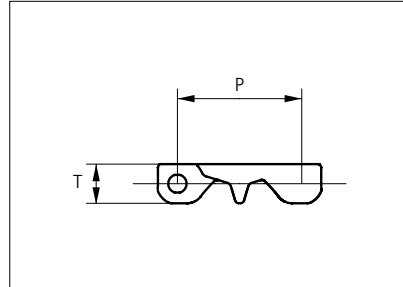




Plastic Modular Belt

Series **uni ECB** Type **C**



Straight running belt
 Nominal pitch: 50.8 mm (2.00 in)
 Surface type: Closed
 Surface opening: 0%
 Front- and backflex radius:
 65 mm (2.60 in)
 uni Snap link (pinless)

Belt material & color	POM SI W		mm	in		mm	in
		P (Nominal)	50.8	2.00	T	16.0	0.94

Non standard material and color: See uni Material and Color Overview.
 POM-SI B is available as MTO and can be used as marker in belt.
 Please note that uni ECB in POM-SI blue is not according to the standard color quality for blue. Small variations may occur.

Belt width			Permissible tensile force (Belt material)		Weight (Belt material)		Min No drive sprocket per shaft	Number of wear strips (min no)	
			POM-SI		POM-SI			**Carry (pcs)	**Return (pcs)
	mm	in	N	lb	kg/m	lb/ft			
K1600	402	15.8	4400	899	5.0	3.36	3	3	2
K1800	452	17.8	5500	1236	6.2	4.44	4	4	2
K2000	501	19.8	5500	1236	6.6	4.17	4	4	2
K2400	603	23.7	6600	1484	7.5	5.04	5	5	3
K3000	754	29.7	7700	1731	9.3	6.25	6	6	3
K3200	806	31.7	8800	1978	10.0	6.72	6	6	3

General belt tolerance is +0/-0.4% at 23°C/73°F.
 *Max. Load per Drive Sprocket. Belt material: 1500 N (337 lbf).
 **Max. Spacing between wear strips, Carry: 152 mm (6 in); Return: 304 mm (12 in).
 All materials are FDA approved for use with food contact. uni ECB complies to the following standards; EC 1935/2004, EU 10/2011, NSF/ANSI/3-A STANDARD 14159-1.
 Material temperature range: -40 to +90°C (-40 to +194°F).
 Non standard belt widths: K1600/K2400/K3200 can be bricklaid to make higher belt widths.
 Non standard belt widths is not recommended by uni-chains because of cleanability.

= Single Link

STANDARD

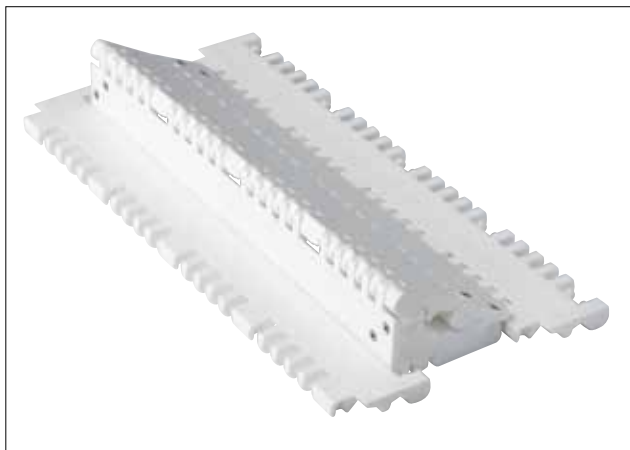
STRAIGHT RUNNING

PITCH 50.8 MM/2.00 IN

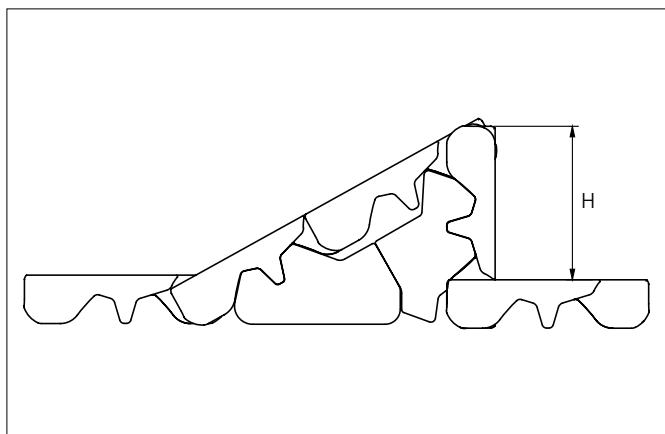


Accessories

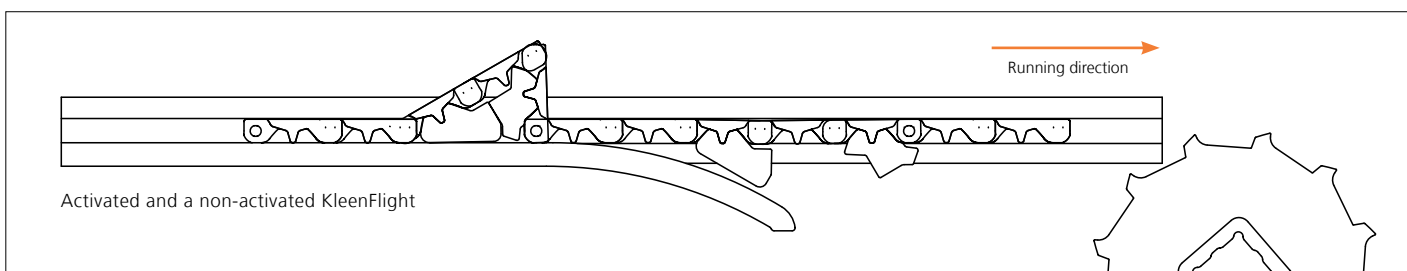
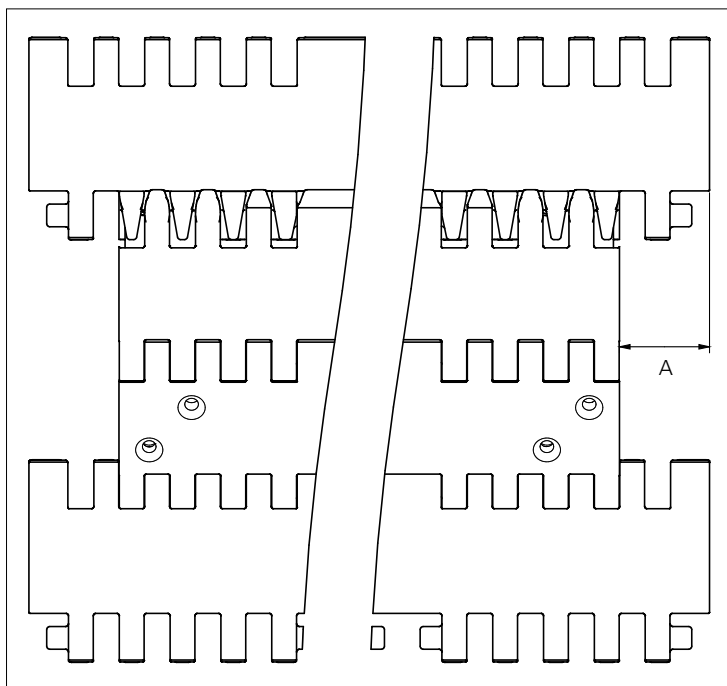
KleenFlight



Type	Material & color	Link combination	A		H	
			mm	in	mm	in
Flat	POM-SI w	K1600/K1800	25.4	1.00	53.0	2.08
		K1800/K2000	25.4	1.00	53.0	2.08
		K2000/K2400	50.8	2.00	53.0	2.08
		K3000/K3200	25.4	1.00	53.0	2.08

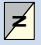


More information about KleenFlight: See the KleenFlight Engineering Guidelines
 When ordering, please state the required distance between the activated KleenFlight

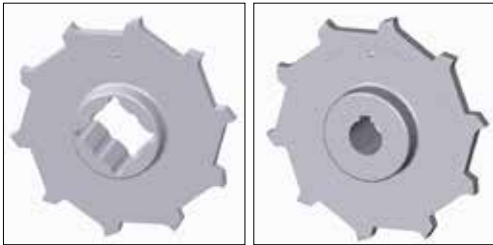


Activated and a non-activated KleenFlight

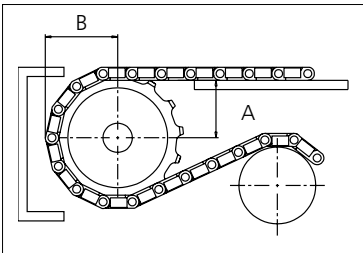
Sprocket

No of teeth	Pilot bore	Bore size											Overall diameter		Pitch diameter		Hub diameter		* A-dimension		B-dimension		Single row/One way	Double row/Two way	Molded PA6 LG	Machined PA6 		
		in	0.78	0.98	1.00	1.18	1.25	1.50	1.57	2.36	2.50	3.54																
		mm	20.0	25.0	25.4	30.0	31.8	38.1	40.0	60.0	63.5	90.0	mm	in	mm	in	mm	in	mm	in								
Z08	x				●	●	●	■	■					132.9	5.23	132.8	5.23	65	2.56	53.3	2.10	74.9	2.95	x		x		
Z10	x					●	●	■	■					166.3	6.55	164.4	6.47	65	2.56	70.2	2.76	90.7	3.57	x		x		
Z10													■	■	166.3	6.55	164.4	6.47	120	4.72	70.2	2.76	90.7	3.57	x		x	
Z12	x					●	●	■	■					198.6	7.82	196.3	7.73	65	2.56	86.8	3.42	106.6	4.20	x		x		
Z12													■	■	198.6	7.82	196.3	7.73	120	4.72	86.8	3.42	106.6	4.20	x		x	
Z16	x					●	●	■	■					263.8	10.39	260.4	10.25	150	5.90	119.7	4.71	138.7	5.46	x		x		

■ Moulded sprocket ● Moulded sprocket



Round bores are always delivered with keyway



Non standard material and color: See uni Material and Color Overview.

Other sprocket sizes are available upon request.
 Two-part sprockets are available upon request.
 Round bores are always delivered with keyway.
 Other bore sizes are available upon request.
 uni Retainer Rings: See uni Retainer Ring data sheet.
 Width of tooth = 9.5 mm (0.37 in)
 Width of sprocket = 42.3 mm (1.67 in)

Max load per sprocket shown does not take bore size into account.
 Please also ensure that sufficient size shaft is chosen for corresponding load.

For correct sprocket position: See uni Assembly Instructions for uni ECB.
 For more detailed sprocket information, contact Customer Service.



Conveyor Belt



Seamless Belt



Modular Belt



Timing Belt



Transmission Belt



Fabrication & service

Solid advice
For all your belting needs
Local stock & service
www.ammeraalbeltech.com

Ammeraal Beltech Modular A/S
Hjulgagervej 21
DK-7100 Vejle

T +45 7572 3100
F +45 7572 3348
admin@unichains.com
www.unichains.com

This information is subject to alteration due to continuous development. Ammeraal Beltech will not be held liable for the incorrect use of the above stated information. This information replaces previous information. All activities performed and services rendered by Ammeraal Beltech are subject to general terms and conditions of sale and delivery, as applied by its operating companies.