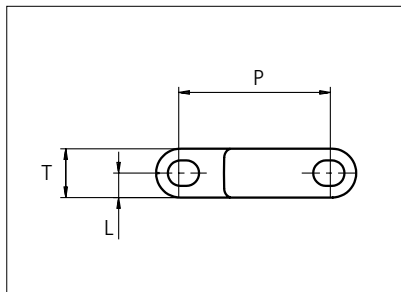




Plastic Modular Belt

Serie **uni L-SNB** Type **36%**



Straight Running
 Nominal pitch: 50.0 mm (1.97 in)
 Surface type: Flat
 Surface opening: 36%
 Backflex radius: 70.0 mm (2.80 in)
 Pin diameter: 8.0 mm (0.31 in)

Belt material & color	PP W	PP N	mm	in	mm	in		
	Pin and lock material & color	PP W PP W	PP W PP N	P (Nominal)	50.0	1.97	L	8.0
			T	16.0	0.63	-	-	-

Non standard material and color: See uni Material and Color Overview.

Alternative pin and lock materials: Pin: PE **W** SS304 PP **G**

Belt width		Permissible tensile force (Belt/pin material)		Belt weight (Belt/pin material)		*Min. No. drive sprocket per shaft	Number of wear strips (Min. No.)	
		PP		PP			**Carry (pcs)	**Return (pcs)
mm	in	N	lbf	kg/m	lb/ft			
153	6.0	2678	602	1.5	1.01	2	2	2
229	9.0	4009	901	2.2	1.51	2	2	2
305	12.0	5340	1200	3.0	2.01	3	3	2
381	15.0	6671	1500	3.7	2.51	3	3	2
457	18.0	8003	1799	4.5	3.01	4	4	2
533	21.0	9334	2098	5.2	3.51	4	4	2
609	24.0	10665	2398	6.0	4.01	5	5	3
686	27.0	11996	2697	6.7	4.51	5	5	3
762	30.0	13328	2996	7.5	5.02	6	6	3
838	33.0	14659	3295	8.2	5.52	6	6	3
914	36.0	15990	3595	9.0	6.02	7	7	4
990	39.0	17322	3894	9.7	6.52	7	7	4

Additional standard belt widths are available in steps of 76.1 mm (3.00 in).

1980	78.0	34650	7789	19.4	13.04	14	14	7
------	------	-------	------	------	-------	----	----	---

Additional standard belt widths are available in steps of 76.1 mm (3.00 in).

2969	116.9	51958	11680	29.1	19.55	20	20	10
------	-------	-------	-------	------	-------	----	----	----

General belt tolerance is +0/-0.4% at 23°C/73°F and 50% RH. For exact belt width contact Customer Service. Non standard belt width on request.

*Max. Load per Drive Sprocket. Belt material PP with snub roller 2000 N (450 lbf), PP without snub roller 1250 N (281 lbf)

**Max. Spacing between wear strips, Carry: 152 mm (6 in); Return: 304 mm (12 in)

***Load capacity per row of reinforcement links in the belt: 2500 N (562 lbf)

***Example: Belt with 8 rows of reinforcement links, permissible load is 8 x 2500 N (562 lbf) = 20000 N (4496 lbf)

= Single Link



STANDARD

STRAIGHT RUNNING

PITCH 50.0 MM/1.97 IN

Accessories

Reinforcement Link



The use of uni-chains belts with the SS reinforcement /pitch control links in blanchers, cookers and other high temperature applications will reduce belt elongation due to temperature by more than 90%. This will simplify the belt take-up system and reduce maintenance.

uni-chains recommends three reinforcement links per K1200 module.

Note: Reinforcement links require the use of SS pins.

Type	Material & color	N/row	Lbf/row
Steel Link	SS316	2500	562

Non Standard material and color: See uni Material and Color Overview.

Sprocket

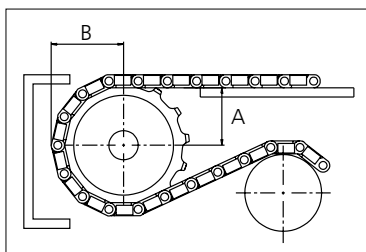
No of teeth	Bore size													Overall diameter		Pitch-diameter		Hub-diameter		A-dimension		B-dimension		Single row/One way	Double row/Two way	Material	
	Pilot bore		0.75	0.78	0.98	1.00	1.18	1.25	1.50	1.57	2.36	2.50	3.54													mm	in
	mm	in												PA6	PA6 LG												
Z06	x					●	●	■	●					92.5	3.64	100.0	3.94	70.0	2.76	35.3	1.39	58.0	2.28	x		x	
Z08	x					●	●	■	●					128.7	5.07	130.7	5.15	70.0	2.76	52.4	2.06	73.3	2.89	x		x	
Z10	x					●	●	■	●					159.8	6.29	161.8	6.37	70.0	2.76	68.9	2.71	88.9	3.50	x		x	
Z10												■		159.8	6.29	161.8	6.37	120.0	4.72	68.9	2.71	88.9	3.50	x			x
Z12	x					●		■	●					192.5	7.58	193.2	7.61	70.0	2.76	85.3	3.36	104.6	4.12	x		x	
Z12												■		192.5	7.58	193.2	7.61	120.0	4.72	85.3	3.36	104.6	4.12	x			x
Z16	x					●		■	●			■		257.3	10.13	256.3	10.09	120.0	4.72	117.7	4.63	126.1	4.96	x			x

■ Molded sprocket

● Molded sprocket

■ Machined sprocket

● Machined sprocket



Other sprocket sizes are available upon request.
 Two-part sprocket are available upon request.
 Round bores are always delivered with keyway.
 Other bore sizes are available upon request.
 uni Retainer Rings: See uni Retainer Ring data sheet
 Width of tooth = 7.0 mm (0.28 in)
 Width of sprocket = 42.3 mm (1.67 in)

Max load per sprocket shown does not take bore size into account.
 Please also ensure that sufficient size shaft is chosen for corresponding load.

For correct sprocket position: See uni Assembly Instructions for uni L-SNB.
 For more detailed sprocket information, contact Customer Service.

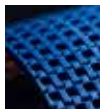
Non standard material and color: See uni Material and Color Overview.



Conveyor Belts



Seamless Belts



Modular Belts



Timing Belts



Transmission Belts



Fabrication & service

Expert advice, quality solutions
and local service
for all your belting needs
www.ammeraalbeltech.com

Ammeraal Beltech Modular A/S
Hjulmagervej 21
DK-7100 Vejle

T +45 7572 3100
F +45 7572 3348
admin@unichains.com
www.unichains.com

This information is subject to alteration due to continuous development. Ammeraal Beltech will not be held liable for the incorrect use of the above stated information. This information replaces previous information. All activities performed and services rendered by Ammeraal Beltech are subject to general terms and conditions of sale and delivery, as applied by its operating companies.