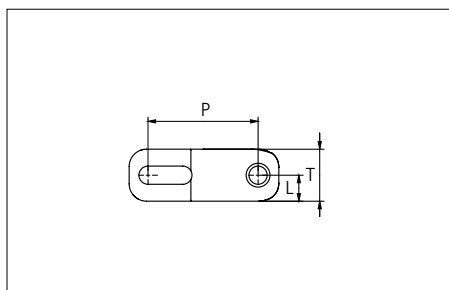
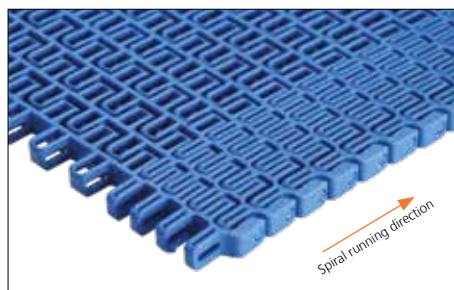




Plastic Modular Belt

Series **uni Flex OSB** Type **60% Open (Radius 2.5/3.0/3.5/4.0)**



Sideflexing belt
 Nominal pitch: 25.4 mm (1.00 in)
 Surface type: Open
 Surface opening: 60%
 Backflex radius: 30.0 mm (1.18 in)
 Pin diameter: 4.0 mm (0.16 in)
 Min. inside radius:
 2.5 / 3.0 / 3.5 / 4.0 x belt width

Recommended Belt material & color	POM-D B	mm	in		mm	in	
		P (Nominal)	25.4	1.00	T	12.0	0.47
Recommended Pin material & color	PA6.6 B	L	6.0	0.24	-	-	-

Other non standard material and color: See uni Material and Color Overview.

Alternative pin and lock systems and materials: Contact Customer Service.

Belt width		Permissible tensile force (Belt/pin material)								Belt weight (Belt/pin material)				*Min. No. drive sprocket per shaft	Number of wear strips (Min. No.)	
		POM-D/PA6.6				PP/PA6.6				POM-D/PA6.6		PP/PA6.6			Carry (pcs)	Return (pcs)
		Straight sections		Curve sections		Straight sections		Curve sections		kg/m	lb/ft	kg/m	lb/ft			
mm	in	N	lbf	N	lbf	N	lbf	N	lbf	kg/m	lb/ft	kg/m	lb/ft			
303	11.9	3333	749	2040	459	2485	559	1224	275	1.6	1.10	1.1	0.77	3	2	2
379	14.9	3979	894	2040	459	2979	670	1224	275	2.1	1.38	1.4	0.96	3	2	2
456	18.0	4634	1042	2040	459	3479	782	1224	275	2.5	1.66	1.7	1.16	5	2	2
533	21.0	5288	1189	2040	459	3980	895	1224	275	2.9	1.94	2.0	1.35	5	2	2
610	24.0	5943	1336	2040	459	4480	1007	1224	275	3.3	2.22	2.3	1.55	5	3	3
686	27.0	6589	1481	2040	459	4974	1118	1224	275	3.7	2.49	2.6	1.74	5	3	3
763	30.0	7243	1628	2040	459	5475	1231	1224	275	4.1	2.77	2.9	1.94	7	3	3
840	33.1	7898	1775	2040	459	5975	1343	1224	275	4.5	3.05	3.2	2.13	7	3	3
917	36.1	8552	1922	2040	459	6476	1456	1224	275	5.0	3.33	3.5	2.33	7	3	3
994	39.1	9207	2070	2040	459	6976	1568	1224	275	5.4	3.61	3.8	2.53	7	3	3
1070	42.1	9853	2215	2040	459	7470	1679	1224	275	5.8	3.89	4.0	2.72	9	4	4
1147	45.2	10507	2362	2040	459	7971	1792	1224	275	6.2	4.17	4.3	2.91	9	4	4

Additional standard belt widths are available in steps of 76.8 mm (3.02 in). Additional non-standard belt widths are available in steps of 25.6 mm (1.01 in).

1454	57.2	13117	2949	2040	459	9966	2240	1224	275	7.9	5.29	5.5	3.69	11	10	5
------	------	-------	------	------	-----	------	------	------	-----	-----	------	-----	------	----	----	---

General belt tolerance is +0/-0.4% at 23°C/73°F. For exact belt width contact Customer Service. Non standard belt width on request.

*Max. Load per Drive Sprocket. Belt material: POM-D 1000 N (223 lbf), PP 550 N (123 lbf).

Belt needs support rollers or flanged rollers at each belt edge for support.

= Single Link



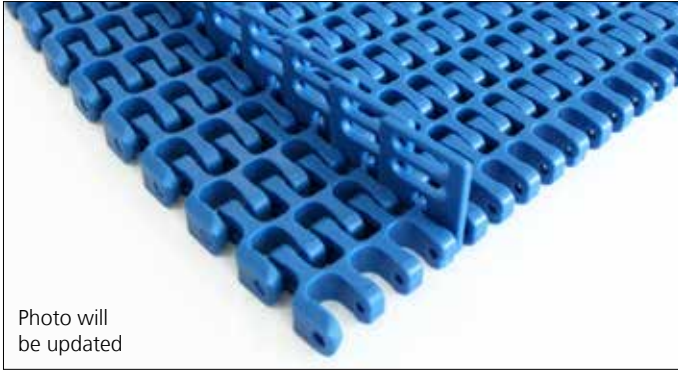
NON STANDARD

SIDE FLEXING

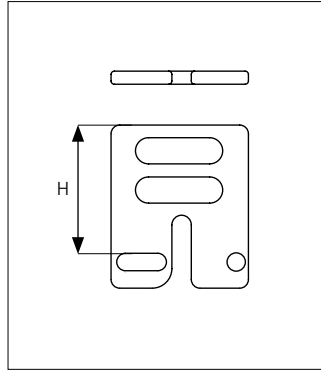
PITCH 25.4 MM/1.00 IN

Accessories

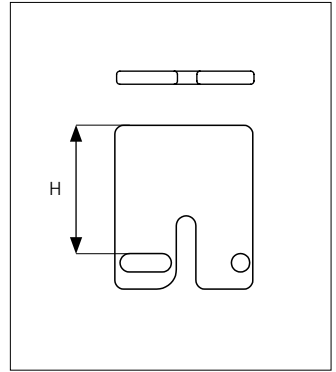
Side Guard



Side Guard Open



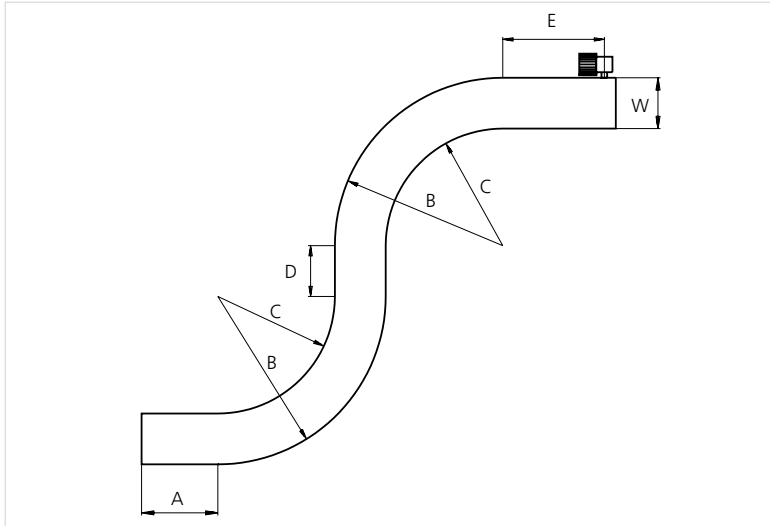
Side Guard Closed



Type	Side Guard Material & color	H	
		mm	in
Side Guard	POM-D B	25.4	1.00
Side Guard Open			

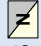
Min. indent for Side Guard: 44.0 mm (1.73 in) and Increment 12.7 mm (0.50 in).
 Non Standard material and color: See uni Material and Color Overview.

Design Guidelines



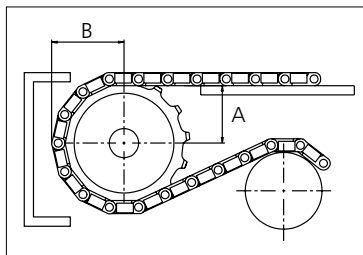
	65% Open Radius 2.2
A	min. 1.5 x W
B	min 3.2 x W
C	min 2.2 x W
D	min 2 x W
E	min 2 x W, min.
W	Belt width

Sprocket

No. of teeth	Bore size									Overall diameter		Pitch diameter		Hub diameter		Dimension A		Dimension B		Single row/Two way	Machined 
	Pilot Bore	in	0.98	1.00	1.18	1.25	1.50	1.57	2.36												
	mm	25.0	25.4	30.0	31.8	38.1	40.0	60.0	mm	in	mm	in	mm	in	mm	in					
Z09	✓		●	●	●	●				75.0	2.95	74.3	2.93	57.8	2.28	28.9	1.14	43.1	1.70	✓	✓
Z12	✓		●	●	●	●	■			100.0	3.94	98.1	3.86	82.8	3.26	41.4	1.63	55.1	2.17	✓	✓
Z15	✓			●	●	●	■	●	■	124.6	4.91	122.2	4.81	107.4	4.23	53.8	2.12	67.1	2.64	✓	✓
Z18	✓				●	●	●	●	■	149.3	5.88	146.3	5.76	132.1	5.20	66.0	2.60	79.2	3.12	✓	✓

■ Machined sprocket

● Machined sprocket



Non standard material and color: See uni Material and Color Overview.

Other sprocket sizes are available upon request

Two-part sprocket are available upon request

Other bore sizes are available upon request

uni Retainer Rings: See uni Retainer Ring data sheet

Width of tooth = 14.0 mm (0.55 in)

Width of sprocket = 30.0 mm (1.18 in)

Max. load per sprocket shown does not take bore size into account.

Please also ensure that sufficient size shaft is chosen for corresponding load.

For correct sprocket position: See uni Assembly Instructions for uni Flex OSB.

For more detailed sprocket information, contact Customer Service.



Conveyor Belts



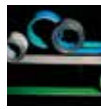
Seamless Belts



Modular Belts



Timing Belts



Transmission Belts



Fabrication & service

Expert advice, quality solutions
and local service
for all your belting needs
www.ammeraalbeltech.com

Ammeraal Beltech Modular A/S
Hjulmagervej 21
DK-7100 Vejle

T +45 7572 3100
F +45 7572 3348
admin@unichains.com
www.unichains.com

This information is subject to alteration due to continuous development. Ammeraal Beltech will not be held liable for the incorrect use of the above stated information. This information replaces previous information. All activities performed and services rendered by Ammeraal Beltech are subject to general terms and conditions of sale and delivery, as applied by its operating companies.